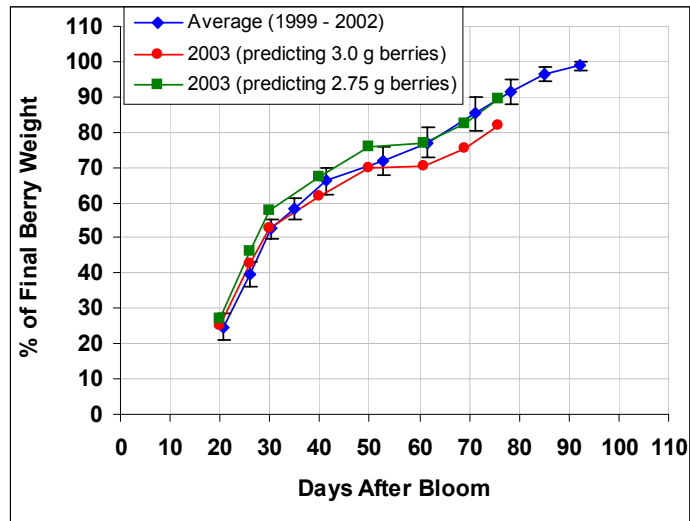
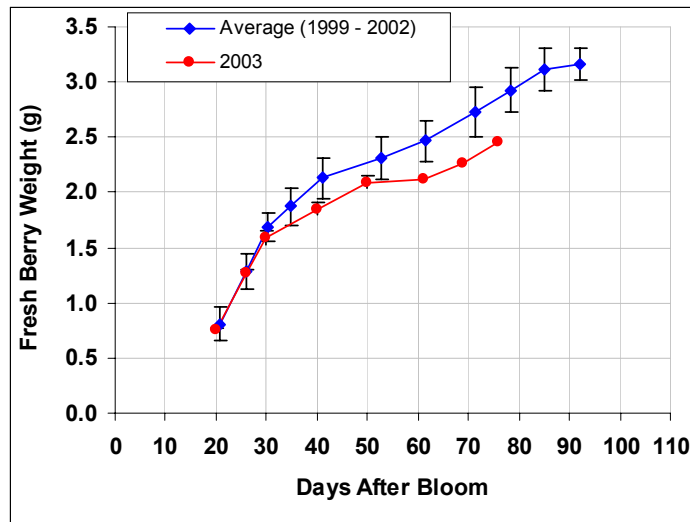


Current Berry Curve and Brix Accumulation in Concord by Dr. Terry Bates
9/9/2003

I have been out on baby duty for a few weeks and have not had a chance to update you on Concord crop development. However, berry weight and brix appear to be progressing normally for the growing season and crop level.

The first two figures show the current actual berry weight data and the % of final berry weight if we are predicting 2.75 or 3.0 g berries at the end of the season. Given the large crop size and the type of pruning on these vines (120 Nodes), we would normally predict 2.75 grams for a final berry weight – and that prediction seems to be holding up when comparing it to the four year average.



The second chart compares the current juice soluble solids accumulation with 2002 data from vines with different crop levels. Typically, sugar accumulation is rapid just after veraison and then slows as we run into shorter days and cooler temperatures. So far, 2003 appears to be following the same trend.

